

### In This Issue

#### Highlights

• EEC & Competitiveness	3
• Aerospace Workshop	3
• EEC Approves 9 WHA Industrial Estates	3
Customer Showcase	4
Newscast WHA Group	5
Customer News	7
Social Contribution	8

### STT Finalizes Land Purchase Deal for New Plant in WHA ESIE 2



STT Inc, a leading specialist in surface treatment and lubrication technology, has signed a land purchase agreement to build a new plant at WHA Eastern Seaboard Industrial Estate 2 (WHA ESIE 2), developed by WHA Industrial Development PLC (formerly known as Hemaraj Land And Development PLC). Located in the Eastern Economic Corridor (EEC), the future facility will enable the Japan-based company to offer its wide range of high-quality lubrication products to its growing portfolio of customers in the region.

#### In the picture:

Mr. Takafumi Sugawawa (center right), President of STT, signed the land purchase contract with Mr. David Nardone (center left), Group Executive Industrial and International, WHA Industrial Development PLC. Also in attendance for the signing ceremony were Mr. Masashi Kayukawa (2nd right), Managing Director of TSTT (Thailand subsidiary), Mr. Vivat Jiratikarnsakul (2nd left), Chief Operating Officer - Industrial and International, and Ms. Ladda Rojanavilaivudh (far right), Vice President - Industrial Estate Customer Development, WHA Industrial Development PLC.

### WHA Industrial Development and IRPC Sign Shareholders Agreement to Develop WHA Industrial Estate Rayong in EEC



The soon-to-be-established venture, with a registered capital of THB 650 million, will be jointly managed and will acquire 2,152 rai of industrial land in Rayong province and develop an industrial estate to be operated by WHA Industrial Development PLC (WHA ID). (Continued on page 5)

### Alliance Laundry Systems Purchases Land and Holds Groundbreaking Ceremony in WHA ESIE 2



Alliance Laundry Systems LLC, a global leader in commercial laundry solutions, recently signed a land purchase contract at WHA Eastern Seaboard Industrial Estate 2 (WHA ESIE 2) in Rayong. Holding its groundbreaking ceremony soon after, the new facility will enhance the company's capacity to keep up with growing worldwide demand for its high-quality equipment, products and services.

#### In the above picture:

Mr. David Nardone (center left), Group Executive Industrial and International, WHA Industrial Development PLC, signed the purchase agreement contract with Mr. Todd Kaull (center right), Vice President - Global Manufacturing, Alliance Laundry Systems, in the presence of Mr. Vivat Jiratikarnsakul (3rd left), Chief Operating Officer, Industrial and International, WHA Industrial Development PLC, Mr. Jan Vleugels (3rd right), Chief Operating Officer of Alliance Laundry Systems, and other company executives.



#### In the picture:

Ms. Ladda Rojanavilaivudh (center left), Vice President - Industrial Estate Customer Development, WHA Industrial Development PLC, hands over a bouquet of flowers at the groundbreaking ceremony to Mr. Todd Kaull (center right), in the presence of Mr. Jan Vleugels (2nd right), Mr. Benjamin Dobbs (far right), Plant Managing Director, Alliance Laundry (Thailand) Co., Ltd, and Ms. Rungruethai Kittipinyochai, Assistant Director, Industrial Estate Customer Development of WHA Industrial Development.

# AUTOMOTIVE CLUSTER THAILAND

EASTERN SEABOARD INDUSTRIAL ESTATE (RAYONG)  
& WHA EASTERN SEABOARD INDUSTRIAL ESTATE 1  
The Strategic Locations in the Eastern Economic Corridor (EEC)



## EEC & COMPETITIVENESS

With all the waves of change sweeping the world, competition these days seems to be strongest in the economic, political and social sectors while taking place in complicated, interconnected and borderless ways.

Because of the non-stop transformations brought about by the digital era, talking about **the Industrial Revolution is a thing of the past since it has been overshadowed by technological changes also known as 'disruptions'**. Many people say that disruptive technology could change the world. Airbnb and GrabTaxi, for instance, reflect the changes in the service industry. To get a clearer picture, let's take a country where industrial development is driven by cutting-edge technology.

Such changes lead to the rise of 'prosumers', (production by consumers), who are turning the new concept into reality. In many countries, the

power industry is affected because consumers can now install solar panels on their roof, and even store energy, just like batteries. If the electricity is stored in large amounts, it can be sold to neighbors via the electricity transmission network using blockchains. Today the roles of the consumer and the producer can be merged into one single role.

**Ms. Jareeporn Jarukornsakul**  
*Chairman and Group CEO*  
*WHA Corporation PCL*

**“Such changes lead to the rise of ‘prosumers’, (production by consumers), who are turning the new concept into reality.”**



### WHA's First Aerospace Workshop 'The Path to Become a Qualified Aerospace Supplier'



WHA Group and the Italian Aerospace Network (IAN) recently co-hosted an executive workshop for top executives of Thai companies interested in entering the aviation and aerospace industry. This event aimed to give automotive companies located within WHA Group's industrial estates the opportunity to meet European professionals in the aerospace industry and learn from their know-how and experience. Guest speakers Mr. Andrea Spiriti (3rd left), IAN President and Mr. Karolus Karni Lando (center), Business Assurance Manager at RINA, talked to participants about quality systems for aerospace players and the latest industry trends. Ms. Siyaphas Chantachairoj (2nd left), Director - Corporate Marketing, WHA Corporation PCL, welcomed the speakers and participants to the workshop.

**For more information:**  
WHA Corporate Marketing  
marketing@wha-group.com  
Tel: 02 719 9995

### EEC Management Committee Officially Approves 9 WHA Industrial Estates as Special Industrial Zones

*Bangkok, May 11, 2018* – WHA Corporation PCL (WHA Group), Thailand's leader in fully-integrated logistics and industrial facilities solutions, is pleased to announce that the Eastern Economic Corridor (EEC) Management Committee, has officially approved another 8 WHA industrial estates, in addition to WHA Eastern Seaboard Industrial Estate 4 (WHA ESIE 4), which was approved in November last year, as EEC industrial promotion zones. The 9 WHA industrial estates that have received approval now cover a total of 34,434 rai in the EEC.

The WHA Industrial Estates that received EEC approval are:

- WHA Chonburi Industrial Estate 1 (WHA CIE 1)
- WHA Chonburi Industrial Estate 2 (WHA CIE 2)
- Eastern Seaboard Industrial Estate (Rayong) (ESIE)
- WHA Eastern Seaboard Industrial Estate 1 (WHA ESIE 1)
- WHA Eastern Seaboard Industrial Estate 2 (WHA ESIE 2)
- WHA Eastern Seaboard Industrial Estate 4 (WHA ESIE 4) – approved in November 2017
- WHA Eastern Industrial Estate (Map Ta Phut) (WHA EIE)
- WHA Eastern Seaboard Industrial Estate 3 (WHA ESIE 3)
- WHA Rayong 36 Industrial Estate

These 9 WHA industrial estates will play an instrumental role in the development of the project's 10 targeted S-Curve industries, in particular Aviation & Logistics, Next-generation Automotive, Automation & Robotics, Smart Electronics, Biofuels and Biochemicals, and Digital.

“Since the EEC initiative was launched by the government, WHA Group has always given its full support, so we are delighted that our 9 industrial estates are now officially part of it,” declared Ms. Jareeporn Jarukornsakul, WHA Chairman and Group Chief Executive Officer. “It will reinforce our continued commitment to play an active role in the development of the 10 targeted industries for the benefit of all stakeholders and the country,” she added.

Mr. David Nardone, Group Executive Industrial and International, WHA Industrial Development said: “This will be an excellent opportunity to encourage a skilled workforce for higher-wage jobs. The openings in the 10 target industries will boost productivity and make our industrial environment more global.”

## *NIKKAKI (Thailand) Co., Ltd*

*Over 80 years of Japanese quality assurance  
and full services of chemical plants*

Japan Chemical Engineering & Machinery Co. Ltd, a leading provider of chemical distillation machinery and facilities, was established in 1928 in Osaka, Japan. Initially manufacturing and distributing distilling machines for shochu makers, the business expanded to all types of chemical plants over the 80 years since. Their technologies are now utilized in various product fields such as chemical products, paints, foods and medicines made by notable Japanese companies.

Established as a local entity under the name NIKKAKI in 2012, the entry to the Thai market was triggered by a consultation from one of their Japanese trading partners/manufacturers who wanted to start production in Thailand, using equipment of equal standard to that be using in Japan. Discovering that most of the machinery could be procured locally, and core parts are imported from Japan, NIKKAKI soon developed their business from smaller-sized jobs such as plant maintenance

and machinery repair through to technical proposals with plant installations.

Now launching into the cleaning solution recycling business, NIKKAKI chose a ready-built factory in the Eastern Seaboard Industrial Estate in Rayong, part of WHA Industrial Development, due to its accessibility close to highways and ports, friendly and attentive staff, and the strength of the brand (formerly known as Hemaraj).



NIKKAKI's future plans focus on making Thailand, as the hub of ASEAN, their secondary sales and technology base behind headquarters in Japan, and also using Vietnam as their secondary production base. With engineers already being trained at each business base, NIKKAKI will also view developments in neighboring countries such as Myanmar.

### **Contact information**

NIKKAKI (THAILAND) Co., Ltd.  
+66 (0)2 261 2898  
<http://nikkaki.co.th/?lang=en>



Nikkaki (Thailand) Co., Ltd. at  
WHA Ready Built Factory,  
Eastern Seaboard Industrial Estate (Rayong)

## WHA Industrial Development and IRPC Sign Shareholders Agreement to Develop WHA Industrial Estate Rayong in EEC

(Continued from page 1)



In the picture:

1. Ms. Jareeporn Jarukornsakul (center right), Chairman and Group CEO, WHA Corporation PCL (WHA Group)
2. Mr. David Nardone (2nd right), Group Executive Industrial and International, WHA Industrial Development PLC
3. Mr. Vivat Jiratikarnsakul (far right), Chief Operating Officer Industrial and International, WHA Industrial Development PLC
4. Mr. Sukrit Surabotsopon (center left), President of IRPC
5. Mrs. Rachadaporn Rajchataewindra (2nd left), Senior Executive Vice President, Corporate Accounting & Finance, IRPC
6. Mr. Somkiat Lertritpuwadol (far left), Senior Executive Vice President, Corporate Commercial and Marketing, IRPC

WHA Industrial Development PLC (WHA ID) (formerly known as Hemaraj Land And Development PLC), a member of WHA Group, Thailand's leader in fully-integrated logistics and industrial facilities solutions, announced on 17 May 2018 the signing of a shareholders agreement with IRPC PCL for the development in Ban Khai district, Rayong province.

WHA ID will hold 60% of the newly-established joint venture, to be named WHA Industrial Estate Rayong Co., Ltd., with the remaining 40% held by IRPC. The company will be set up by the early third quarter of 2018 with a registered capital of THB 650 million, and will acquire 2,152 rai of land from IRPC.

Strategically located, WHA Industrial Estate Rayong is 20 kilometers from Rayong city, 36 kilometers from Map Ta Phut Port and 50 kilometers from U-Tapao International Airport. As part of the government-sponsored Eastern Economic Corridor (EEC) initiative, the new industrial estate will also target investors in the 10 S-curve industries such as next-generation automotives, robotics, aviation and logistics, as well as mechanical assembly, food processing and other supporting industries. Under the management of WHA ID, it will benefit from the company's 30-year expertise and high standards in terms of engineering design, planning and environment protection. WHA ID will be responsible for marketing and securing both Thai and international investors and tenants, as well as implementing its best practices in environment protection, water and waste management, community relations and corporate social responsibility (CSR) policies.

"WHA ID has established this joint venture company with IRPC to develop this landmark project in Thailand," said Ms. Jareeporn Jarukornsakul, WHA Chairman and Group Chief Executive Officer. "This new industrial estate is in a good location at Ban Khai, Rayong, in the EEC. WHA ID will apply the highest standards for the benefit of all stakeholders, including our customers, employees and the surrounding communities," she added.

"This joint venture with WHA ID is based on building the synergy between two companies," commented Mr. Sukrit Surabotsopon, President of IRPC. "We are confident that our combined vision together with WHA's expertise and experience will enable to develop WHA Industrial Estate Rayong to attract investors from industries of the future and cater to the needs of local communities," he declared.

Mr. David Nardone, Group Executive Industrial and International, WHA Industrial Development, said: "We are looking forward to developing the new industrial estate that will be well-equipped to accommodate the EEC's 10 S-curve industries. We will deliver a state-of-the art, customer-focused world-class industrial estate that will create new demand for a skilled workforce and help boost the country's growth," he said.

With the establishment of WHA Industrial Estate Rayong, WHA ID confirms its leading position as the largest industrial estate developer in Thailand, with a combined area of over 48,500 rai (7,760 hectares).

## WHA Group Welcomes 70 Multinational Investors Led by BOI on Comprehensive Tour of WHA Industrial Development Estates



The Thailand Board of Investment (BOI) organized a visit for a group of investors from China, Japan, India, USA and Europe to the Eastern Seaboard Industrial Estate (ESIE) and the WHA Eastern Seaboard Industrial Estate 1 (WHA ESIE 1) located in the country's Eastern Economic Corridor (EEC). The extensive tour aimed to explore investment opportunities, observe the growth and operations of local and foreign companies, and showcase WHA Group's capacity to support the industries of the future. During the visit, the delegation also viewed the WHA Industrial Development wastewater treatment facility, and the premises of Kerry Logistics, with its state-of-the-art supply chain facilities.

In the picture:

On hand to welcome the delegation of foreign investors was Ms. Siyaphas Chantachairoj (center), Director - Corporate Marketing and other executives of WHA Corporation PCL. The group was given an extensive tour of ESIE and WHA ESIE 1 in the EEC.

## Representatives from China's 'Belt and Road Initiative' Visit WHA ESIE 1



An industrial research team composed of professors and students from China's Jilin University came to Rayong recently to visit the WHA Eastern Seaboard Industrial Estate 1 (WHA ESIE 1). The group visited the Eastern Economic Corridor to observe manufacturing activities and to study potential business development under China's Belt and Road Initiative. Mr. Khamhoung Ratsamany (center), Vice President - Business Operation, WHA Utilities and Power PLC, a subsidiary of WHA Corporation PCL, welcomed the group and gave them a tour of the estate's constructed wetland, a biological and environment-friendly system for treating wastewater, as advocated by His Majesty the late King Bhumibol Adulyadej.

## WHA Group Chairman Receives Outstanding ASEAN Women Entrepreneurs 2018 Award



Ms. Jareeporn Jarukornsakul Chairman and Group CEO of WHA Corporation PCL (WHA Group), Thailand's leader in fully-integrated logistics and industrial facilities solutions, recently received the Outstanding ASEAN Women Entrepreneurs 2018 Award from

General Anantaporn Kanjanarat, Minister of Social Development and Human Security, in the presence of Khunying Natthika Angubolkul Wattanavekin, Chairman - Executive Board Committee, ASEAN Women Entrepreneurs Network (AWEN) Thailand. Ms. Jareeporn (Below) was selected for her personal excellence, integrity, compassion and capacity as a role model for women in Thailand's business community.



## WHA Group Holds 2018 Investors Club Seminar



WHA Group recently held its annual Investors Club Seminar at the Eastern Seaboard Industrial Estate (ESIE) in Rayong. This year's speaker, Mr. Wirat Tatsaringkansakul (front row, 8th right), Executive Director, Regional Investment and Economic Center 4 of the Board of Investment of Thailand (BOI), shared an overview of the current investment promotion policy and measures, and discussed a broad range of topics including robotics, the Thailand Smart Visa, and the role of the BOI Unit for Industrial Linkage Development (BUILD).

## WHAUP Expands Overseas Water Business in Vietnam with Exclusivity Rights in WHA Industrial Zone - Nghe An

WHA Utilities and Power PLC (WHAUP) recently announced an establishment of its subsidiary to exclusively invest and operate water utilities in WHA Industrial Zone - Nghe An Province, Vietnam, with a business license for 49 years until 29 May 2067. Mr. Wisate Chungwatana, WHAUP CEO, revealed its continuous investment plan that the initial stage will be the development of water utilities, covering a total area of 498 hectares (3,112.5 rai). The demand for industrial water and wastewater treatment is estimated at around 12,000 cubic meters and 9,600 cubic meters per day respectively.



WHAUP CEO (above), Mr. Wisate said that the Board of Directors of the company has approved the establishment of a new subsidiary named WHAUP Nghe An Joint Stock Company to invest and operate the water business in Vietnam, with its first project in WHA Industrial Zone - Nghe An. WHAUP, a leading fully-integrated utilities services provider across WHA's industrial estates and industrial lands in Thailand and overseas, handles all water operations such as raw water, industrial water, wastewater treatment and power in the estates.

Signing a joint agreement with WHA Industrial Zone Nghe An Joint Stock, a subsidiary of WHA Corporation PLC, marks WHAUP's first step to expand its business into the international market, especially in CLMV countries (Cambodia, Laos, Myanmar, Vietnam) as part of WHAUP's long-term strategic investment plan.

## WHA Group Hosts Investors Club Seminar Feature on 'Solar Rooftops for Thai Industry – Saving with Clean Energy'

WHA Group recently held its Investors Club Seminar on the theme 'Solar Rooftops for Thai Industry – Saving with Clean Energy' at the WHA Training Center, ESIE Plaza 1, Eastern Seaboard Industrial Estate in Rayong. Mr. Wisate Chungwatana, CEO of WHA Utilities and Power PLC, welcomed customers from WHA Group's industrial estates and explained



the various benefits of solar energy for the industrial sector. Sharing his insights on fundamental designs for solar rooftop power generation systems was Mr. Nitad Jaisue,

Deputy Managing Director, KPN Green Energy Solution.

## Customer NEWS

### Mazda Raises Production Capacity with New Engine Machining Factory in ESIE



Mazda Powertrain Manufacturing (Thailand) Co., Ltd. (MPMT), an affiliate of Mazda Motor Corporation, recently held the grand opening ceremony of its new engine machining factory at Eastern Seaboard Industrial Estate (Rayong), located in the Eastern Economic Corridor (EEC). The new facilities raise production capacity from 30,000 to 100,000 units SKYACTIV engines annually. Moving forward, MPMT will start production of the SKYACTIV-G 2.0, an engine that will be supplied to Mazda's assembly plants in Malaysia and Vietnam, as well as Thailand.

*In the picture:*

Mr. David Nardone (2nd right), Group Executive Industrial and International, WHA Industrial Development PLC, hands over the keys of

a small fleet of golf carts to Mr. Mitsunobu Mukaida (4th left), MPMT President and CEO, to mark the celebration. Also present were Mr. Vivat Jiratikarnsakul (far right), Chief Operating Officer, Industrial and International, WHA Industrial Development PLC, and other company executives.

### TADA (Thailand) Holds Foundation Stone Laying Ceremony at ESIE



TADA (Thailand) Co., Ltd., manufacturer of high-quality synthetic resins, pumps and other products used in the automotive and electronics sectors, recently held the foundation stone laying ceremony of its new facility at Eastern Seaboard Industrial Estate (ESIE) developed by WHA Industrial Development PLC (WHA ID), located in the Eastern Economic Corridor (EEC). Using the

latest innovative technology from Japan, the future automated factory will help the company meet the increased demand for its products in the region.

*In the picture:*

Ms. Ladda Rojanavilaivudh (center right), Vice President - Industrial Estate Customer Development, WHA Industrial Development PLC, congratulated Mr. Kentaroh Tada (center left), President of TADA (Thailand), and Mr. Nao Tanada (2nd left), Managing Director of TADA (Thailand), during the foundation stone laying ceremony of the TADA factory.

### BorgWarner Inaugurates New Plant at ESIE

BorgWarner (Thailand) Ltd., a business of BorgWarner Inc, a global leader in powertrain systems and solutions, recently held the grand opening ceremony of its new world-class manufacturing plant at Eastern Seaboard Industrial Estate (Rayong) developed by WHA Industrial Development PLC (WHA ID). Strategically located in Thailand's Eastern Economic Corridor (EEC), this 6,500 sqm facility will produce fuel-efficient turbochargers for a wide range of global automakers based in the region.

# Customer NEWS



*In the picture:*  
Mr. David Nardone (center right), Group Executive Industrial and International, WHA Industrial Development (WHA ID), hands over a portrait of His Majesty the late King Bhumiphol Adulyadej to Dr. Martin Roessing (center left), Project Director, BorgWarner (Thailand), in the presence of Ms. Ladda Rojanavilavudh (2nd right), Vice President, and Mr. Apisak Kamwan (2nd left), Assistant Director of Industrial Estate Customer Development at WHA Industrial Development PLC.



## Continental Holds Machine Installation Ceremony at New Rayong Plant



Continental recently installed its first machine at the new Greenfield tire plant located at WHA Eastern Seaboard Industrial Estate 4 (WHA ESIE 4) in Rayong, located in Thailand's Eastern Economic Corridor (EEC). With over 140 years of tire-manufacturing experience, the Germany-based company expects to start production at this world-class energy-efficient

site in 2019, with a targeted annual capacity of four million tires during the first phase.

*In the picture:*  
Celebrating the machine installation ceremony with around 180 guests in attendance were: Mr. Nikolai Setzer (3rd right), Member of the Executive Board of Continental and Head of Tire Division, Mr. Bernhard Trilken (2nd left), Senior Vice President Manufacturing Passenger and Light Truck Tires (PLT) & Global Tire Logistics, and Mr. Vignesh Devasenapathy (3rd left), Project Manager PLT Greenfield Rayong, with Mr. David Nardone (center), Group Executive Industrial and International, Mr. Vivat Jiratikarnsakul (2nd right), Chief Operating Officer Industrial and International, Ms. Ladda Rojanavilavudh (right), Vice President - Industrial Land Customer Development, of WHA Industrial Development PLC, and Ms. Siyaphas Chantachairoj (left), Director - Corporate Marketing, WHA Corporation.



# Social Contribution

## WHA Group Donates New Workout Equipment and Fitness Machines to Pluak Daeng Hospital



Representing WHA Group, Corporate Affairs Manager of WHA Industrial Development PLC Mr. Sunya Baopoonthong delivered a contribution to Pluak Daeng Hospital in Rayong province to build an exercise room with workout equipment and fitness machines. WHA Group supports the hospital's activities to encourage wellness and a healthy lifestyle among community members.



## WHA Group Supports Campus Improvement at Wat Chalermklap School



Another contribution was presented by Mr. Sunya to Wat Chalermklap School in Nong Yai district, Chonburi, to enhance the campus grounds. A purpose-built stage will also be constructed on the ground floor to enable students to showcase their talents, build their confidence and bring the community together.



## WHA Group and Chulalongkorn University Hold Wastewater Management Training for Laem Chabang



Assistant Professors Chaiyaporn Puprasert and Sarun Tejasen from the Department of Environmental Engineering, Faculty of Engineering at Chulalongkorn University, in collaboration with Mr. Varanon Laosuwan, Director - Utilities Project Development, WHA Utilities and Power PLC, a subsidiary of WHA Corporation PCL, explained the principles of wastewater management and treatment to laboratory and engineering staff from the Laem Chabang Municipal Office. This training session was part of WHA Group's 'Clean Water for the Planet' corporate social responsibility (CSR) project.





# Social Contribution

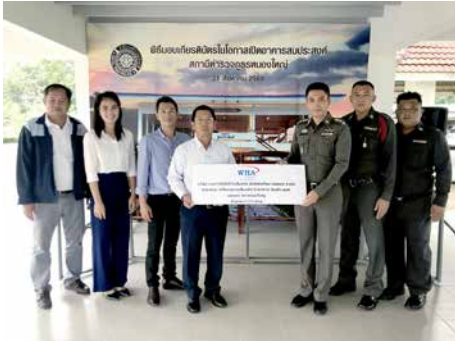
## WHA Group Kicks Off the New School Year in the 21st Year of Annual School Contribution Program

WHA Corporation PCL marks the 21st year of its Annual School Contribution Program by distributing general school materials such as backpacks, notebooks and stationery as well as sports and art supplies. This year, a total of 18,700 students in 69 schools around WHA Group's Industrial Estates in Rayong and Chonburi the Eastern Seaboard Industrial Estate (Rayong), WHA Eastern Seaboard Industrial Estate 1, 2 & 4, WHA Eastern Industrial Estate (Map Ta Phut), WHA Chonburi Industrial Estate 1 & 2 and WHA Rayong Industrial Land benefitted from this uplifting program to help schoolchildren in their overall development and to reach out to the neighboring communities.



# Social Contribution

## WHA Group Supports New Audio Amplifiers for Nong Yai Police Station



Mr. Sunya Baopoonthong, Corporate Affairs Manager at WHA Industrial Development PLC, supported money to purchase high-quality amplifiers for Nong Yai provincial police station in Chonburi. These audio resources will be used for conducting talks and activities to educate the community members on traffic regulations, emergency procedures and public safety.

## WHA Group Launches Organic Wood Vinegar Project in Ban Khao Hin School



Mr. Sunya Baopoonthong (3rd right), Corporate Affairs Manager at WHA Industrial Development PLC, visited Ban Khao Hin School to hand over a donation to build a kiln for organic wood vinegar. This substance will be used as an alternative to chemicals to eliminate pests and improve soil quality, and this CSR activity has raised awareness of environmental issues among the community.

## WHA Group Supports Greenhouse Project for Ban Khao Hin School



Ban Khao Hin School also received a financial contribution from Mr. Sunya (back row, 4th left) on behalf of WHA Group for a donation used for a greenhouse to teach children how to grow organic vegetables, in line with His Majesty the late King Bhumibol Adulyadej's sufficiency economy philosophy.

## WHA Group Supports Reading Appreciation Project at Baan Ta Jarm School



Baan Ta Jarm School in Chonburi received money from WHA Industrial Development PLC towards the purchase of graded reading materials to help students during their free time. This donation supports the school's Reading Appreciation project to encourage young people to develop good reading habits and cultivate a love for learning.

## WHA Group Donates New Water Dispenser for Nong Sua Chang Child Development Center



A brand new water dispenser was presented to Nong Sua Chang Child Development Center in Chonburi province on behalf of WHA Industrial Development PLC. Mr. Sunya Baopoonthong (3rd left), Corporate Affairs Manager, visited the Center to deliver the dispenser that will provide the community's children with easy access to clean, filtered water.

## Scholarships Offered by WHA Group to Ban Khai Technical College



WHA Group recently awarded scholarship grants to 16 deserving first-year high vocational school students from Ban Khai Technical School in Rayong. Scholarships have been earmarked from the company's education advocacy program for neighboring communities in the Eastern Economic Corridor (EEC). WHA Industrial Development representative Mr. Preeprem Malasitt (3rd right, back row) congratulates the recipients of vocational scholarships in the presence of School Director Acting Sub-Lieutenant Shoosheep Arunluang (4th left, back row).

## 2018 Training Program

### WHA Training Center, Eastern Seaboard Industrial Estate (Rayong) January-December 2018

No.	Course	Time	No. of Participant	Course/person (Baht)	Aug'18	Sep'18	Oct'18	Nov'18	Dec'18
1	การขับรถ Forklift อย่างถูกวิธีและปลอดภัย Operation Technique of Forklift Truck	9:00-16:00	30	1,800.00	Fri,17	Fri,14	Fri,19	Fri,16	Fri,21
2	คณะกรรมการความปลอดภัยอาชีวอนามัย และสภาพแวดล้อมในการทำงาน Health, Safety and Working Environment Committee (คปอ.)	9:00-16:00	40	2,300.00		Tue-Wed 11-12		Tue-Wed 13-14	
3	เจ้าหน้าที่ความปลอดภัยในการทำงานระดับ หัวหน้างาน SAFETY OFFICER : SUPERVISOR LEVEL	9:00-16:00	40	2,300.00	Tue-Wed 7-8		Tue-Wed 16-17		Tue-Wed 18-19
4	เจ้าหน้าที่ความปลอดภัยในการทำงานระดับ บริหาร SAFETY OFFICER : MANAGEMENT LEVEL	9:00-16:00	40	2,500.00				Tue-Wed 6-7	
5	การปฐมพยาบาลเบื้องต้นและการช่วยฟื้นคืนชีพ First Aid & CPR Course	9:00-16:00	30	1,600.00		Mon,10			Wed,12
6	การพัฒนาภาวะผู้นำ Leadership Development	9:00-16:00	30	2,000.00					
7	ทักษะสำหรับหัวหน้างาน (7 Supervisor skill) สำหรับหัวหน้างานใหม่และหัวหน้างานในระดับต้น	9:00-16:00	30	2,000.00	Wed,15				
8	สุดยอดหัวหน้างาน (Excellent Supervisor) สำหรับหัวหน้างานตั้งแต่ระดับกลางขึ้นไป	9:00-16:00	30	2,000.00		Wed,19			
9	สุดยอดศิลปการบังคับบัญชาระดับ 5 ดาว Excellent Arts of Supervisory skill	9:00-16:00	30	2,000.00			Thu,11		
10	เป็น"หัวหน้างาน"อย่างไรให้ดีใจผู้ร่วมงาน E.Q. for Great Supervisor	9:00-16:00	30	2,000.00				Fri,9	
11	การสร้างภาวะผู้นำในการเป็นหัวหน้างาน (Leadership for Leader)	9:00-16:30	30	2,000.00			Mon,15		Mon,17
12	ทักษะการสื่อสารสำหรับหัวหน้างาน (Communication skill for leader)	9:00-16:30	30	2,000.00		Mon,17		Mon,12	
13	เทคนิคการเป็นวิทยากรมืออาชีพ Train the trainer	9:00-16:30	30	2,000.00	Fri,10				
14	Microsoft Excel2013-2016 : Basic level	9:00-16:00	15	2,000.00					
15	Microsoft Excel2013-2016 :Intermediate level	9:00-16:00	15	2,000.00				Fri,23	
16	Microsoft Excel2013-2016 :Advanced level	9:00-16:00	15	2,000.00	Fri,24				Fri,14
17	Microsoft PowerPoint2013-2016 :Intermediate-Advance	9:00-16:00	15	2,000.00		Fri,21			
18	Microsoft Word2013-2016 :Intermediate-Advance	9:00-16:30	15	2,000.00			Fri,12		

\*\*Please contact Khun Wanna for more information at WHA Training Center; Tel: 0 3301 7224-6 Fax: 0 3301 7223 E-mail: wannaw@wha-group.com

\*\*To apply for training, please submit a completed application form at least 2 weeks prior to the date of training course.

\*\* The schedule may be subject to change as appropriate.

## Other Training Programs

### WHA Training Center, Eastern Seaboard Industrial Estate (Rayong) January-December 2018)

No.	Course	Time	No. of Participant	Course/person (Baht)	Jan'18	Feb'18	Mar'18	Apr'18	May'18	Jun'18	Jul'18	Aug'18	Sep'18	Oct'18	Nov'18	Dec'18
1	TOEIC Test at ESIE	9:00-12:00 13:00-16:00	50	-		Fri,9		Thu,5		Fri,8		Thu,9		Fri,5		Thu,13

Remark: For more information or reservation of TOEIC Test, please contact CPA; Tel: 0 2260 7061, 0 2259 3990

# WHA Industrial Skills Cooperation Academy (WHA ISCA)



Call to Apply Now  
038 955282

## หลักสูตรฝึกอบรม ศูนย์ความร่วมมือฝึกอบรมทักษะอุตสาหกรรมดับบลิวเอชเอ Training Programs WHA Industrial Skill Cooperation Academy : WHA ISCA

ลำดับ No.	หลักสูตร Module	สาคหลักสูตร (บาท) Customer Fee (Bairt)	ระยะเวลา (วัน) Duration (Day)	จำนวนผู้ Participants	ส.ค.	หลักสูตรโดย Module by	สถานที่ Venue
					Aug		
1	Modbus	Free	3	20	23-25	สถาบันพัฒนาฝีมือแรงงาน 17 ระยอง	สถาบันพัฒนาฝีมือแรงงาน 17 ระยอง
2	Servo Motor	Free	3	20	15-17		ESIE Plaza 1 บิคมฯอีสเทิร์นซีบอร์ด (ระยอง)
3	Basic Embedded System (ระบบสมองกลฝังตัว)	Free	3	20	1-3		สถาบันพัฒนาฝีมือแรงงาน 17 ระยอง
4	Electro Pneumatic	Free	3	20	6-8		สถาบันพัฒนาฝีมือแรงงาน 17 ระยอง
5	Basic Hydraulic	Free	3	20	20-22		สถาบันพัฒนาฝีมือแรงงาน 17 ระยอง
6	Auto CAD 2D	Free	3	20	9-11		ESIE Plaza 1 บิคมฯอีสเทิร์นซีบอร์ด (ระยอง)
7	Auto CAD 3D	Free	3	20	14-16		ESIE Plaza 1 บิคมฯอีสเทิร์นซีบอร์ด (ระยอง)

ติดต่อสอบถามหลักสูตร:  
Inquiries:

สถาบันพัฒนาฝีมือแรงงาน 17 ระยอง (RY-ISD) ว่าที่ร้อยตรี วัลย์ สุขียุติ Email : kenywin@yahoo.com โทร : 089 240 8390	ESIE Plaza 1 บิคมอุตสาหกรรมอีสเทิร์นซีบอร์ด (ระยอง) ณัฐกานจน์ กานต์วิศิษฐ์/ บิฐยา มังกร Email : natthakarnk@wha-group.com โทร : 033 017 224-6
---	--

หมายเหตุ :

- แจ้งความประสงค์เข้ารับการฝึกอบรม โดยส่งสำเนาใบสมัคร (ทพ.101) ทาง email ผู้ประสานงาน
- แจ้งลงทะเบียน หรือเลื่อนกำหนดการ หรือยกเลิก ก่อนถึงวันฝึกอบรมล่วงหน้าอย่างน้อย 2 สัปดาห์
- เอกสารการลงทะเบียนต้องจริงส่ง ณ วันฝึกอบรมวันแรก (แบบ ทพ.101 สำเนาบัตรประจำตัวประชาชน รูปถ่ายขนาด 1 นิ้ว) อย่างละ 1 ฉบับ
- To apply for training, please submit a completed application form via e-mail to natthakarnk@wha-group.com.
- To register, change or cancel the training course, please notify at least 2 weeks prior to the date of training course.
- Please submit the original documents i.e. application form, copy of the ID card and 1 inch photo on the training date.



## Hiring People?

ประกาศรับสมัครงานฟรี  
สำหรับผู้ประกอบการในนิคมอุตสาหกรรมดับบลิวเอชเอ



### Job posting is FREE OF CHARGE for WHA customers

ส่งรายละเอียดมาได้ที่  
Send your job announcement to [jobpool@wha-industrialestate.com](mailto:jobpool@wha-industrialestate.com)  
[www.wha-industrialestate.com/en/job-pool](http://www.wha-industrialestate.com/en/job-pool)

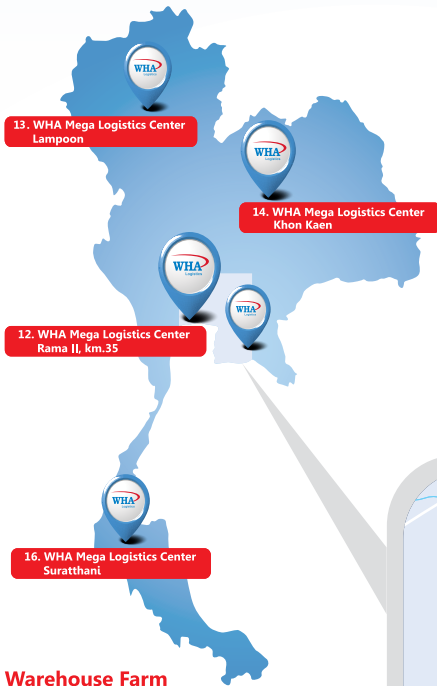



# WHA's strategic locations for your investment



## 50+ Locations in Thailand

- 9+ Industrial Estates
- Eastern Economic Corridor (EEC)
- Built-to-Suit Factories & Warehouses
- Ready Built Factories & Warehouses

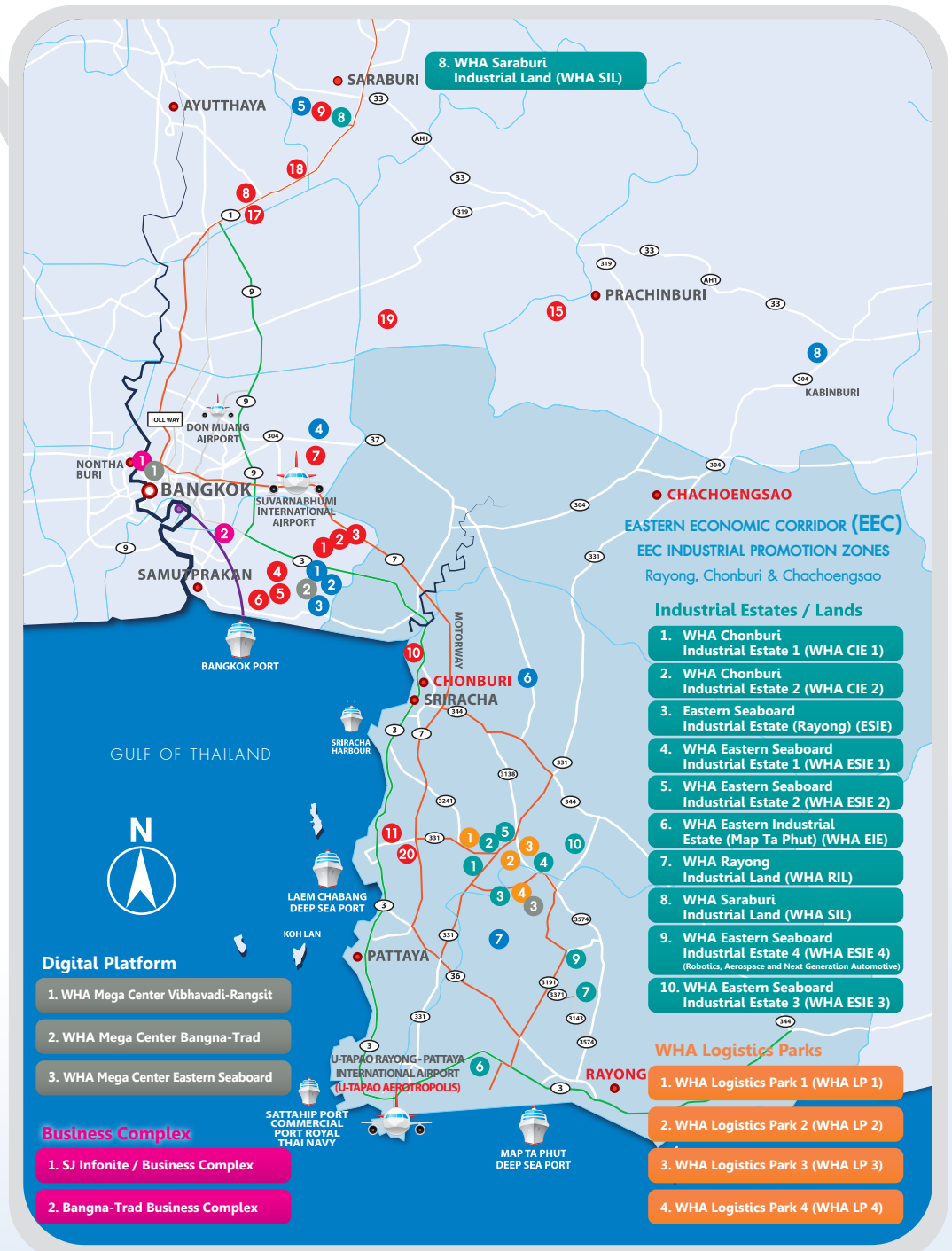


### Warehouse Farm

1. WHA Mega Logistics Center Bangna-Trad km.18
2. WHA Mega Logistics Center Bangna-Trad km.19
3. WHA Mega Logistics Center Bangna-Trad km.23 (2 Phases)
4. WHA Mega Logistics Center Chonlaharnpichit km.3 (2 Phases)
5. WHA Mega Logistics Center Chonlaharnpichit km.4
6. WHA Mega Logistics Center Chonlaharnpichit km.5
7. WHA Mega Logistics Center Ladkrabang
8. WHA Mega Logistics Center Wangnoi 61
9. WHA Mega Logistics Center Saraburi
10. WHA Mega Logistics Center Panthong, Chonburi (2 Phases)
11. WHA Mega Logistics Center Laemchabang
12. WHA Mega Logistics Center Rama II, km.35
13. WHA Mega Logistics Center Lampoon
14. WHA Mega Logistics Center Khon Kaen
15. WHA Mega Logistics Center Kabinburi
16. WHA Mega Logistics Center Suratthani
17. WHA Mega Logistics Centers Wangnoi 61 Phase 2
18. WHA CENTRAL Mega Logistics Center Wangnoi 63
19. WHA Mega Logistics Center Lum Luk Ka
20. WHA Mega Logistics Center Laemchabang 2

### Built-to-Suit Factories and Warehouses

1. Consumer Goods Distribution Center
2. Healthcare Air-Con Distribution Center
3. Hazardous Goods Distribution Center
4. Ladkrabang Logistics Center (2 Phases)
5. Diaper Manufacturing
6. Consumer Goods Distribution Center
7. Aerospace Manufacturing
- Motorbike Manufacturing
- Automation & Robotics
- Aerospace Factory
8. WHA Ready Built Factory Park 1 @Hi-tech Kabin



# WHAUP Solar Rooftop

Saving upto  
25% on Electricity Bill  
ZERO Investment  
Free Long-term Service



**Contact**  
WHA Utilities and Power Public Company Limited

[www.wha-up.com](http://www.wha-up.com)

E-mail : [solarroof@wha-up.com](mailto:solarroof@wha-up.com)



 (+66) 61 394 2111, (+66) 2 719 9559



WHA's latest locations for  
Industrial Cluster in  
Eastern Economic Corridor (EEC)  
Robotics, Aerospace & Next Generation Automotive

# WHA Eastern Seaboard Industrial Estate



- Best suit for automotive, high technology industry, electronics, aircraft or aeronautics, consumer product, light industry, etc.
- Near Laem Chabang Deep Sea Port and Sriracha City
- 6-10 KM. to Eastern Seaboard Industrial Estate (Rayong) and WHA Eastern Seaboard Industrial Estate 1

WHA Industrial Development PLC.

**T. 662 719 9555 [www.wha-industrialestate.com](http://www.wha-industrialestate.com)**

Email: [marketing@wha-group.com](mailto:marketing@wha-group.com)



The World Class Developer in Thailand

Hemaraj Chonburi Industrial Estate  
นิคมอุตสาหกรรมเหมราชชลบุรี

**WHA Chonburi**  
Industrial Estate **1**  
WHA CIE

นิคมอุตสาหกรรมดับบลิวเอชเอ  
ชลบุรี 1

**Eastern Seaboard**  
Industrial Estate (Rayong)

ESIE

นิคมอุตสาหกรรมอีสเทิร์นซีบอร์ด  
(ระยอง)

Hemaraj Chonburi Industrial Estate 2  
นิคมอุตสาหกรรมเหมราชชลบุรี 2

**WHA Chonburi**  
Industrial Estate **2**  
WHA CIE

นิคมอุตสาหกรรมดับบลิวเอชเอ  
ชลบุรี 2

Hemaraj Eastern Seaboard Industrial Estate  
นิคมอุตสาหกรรมเหมราชอีสเทิร์นซีบอร์ด

**WHA Eastern Seaboard**  
Industrial Estate **1**  
WHA ESIE

นิคมอุตสาหกรรมดับบลิวเอชเอ  
อีสเทิร์นซีบอร์ด 1

Hemaraj Eastern Industrial Estate (Map Ta Phut)  
นิคมอุตสาหกรรมเหมราชตะวันออก (มาบตาพุด)

**WHA Eastern**  
Industrial Estate (Map Ta Phut)  
WHA EIE

นิคมอุตสาหกรรมดับบลิวเอชเอ  
ตะวันออก (มาบตาพุด)

Hemaraj Eastern Seaboard Industrial Estate 2  
นิคมอุตสาหกรรมเหมราชอีสเทิร์นซีบอร์ด 2

**WHA Eastern Seaboard**  
Industrial Estate **2**  
WHA ESIE

นิคมอุตสาหกรรมดับบลิวเอชเอ  
อีสเทิร์นซีบอร์ด 2

Hemaraj Saraburi Industrial Land  
เขตประกอบการอุตสาหกรรมเหมราชสระบุรี

**WHA Saraburi**  
Industrial Land  
WHA SIL

เขตประกอบการอุตสาหกรรม  
ดับบลิวเอชเอ สระบุรี

Hemaraj Eastern Seaboard Industrial Estate 4  
นิคมอุตสาหกรรมเหมราชอีสเทิร์นซีบอร์ด 4

**WHA Eastern Seaboard**  
Industrial Estate **4**  
WHA ESIE

นิคมอุตสาหกรรมดับบลิวเอชเอ  
อีสเทิร์นซีบอร์ด 4

Hemaraj Rayong Industrial Land  
เขตประกอบการอุตสาหกรรมเหมราชระยอง

**WHA Rayong**  
Industrial Land  
WHA RIL

เขตประกอบการอุตสาหกรรม  
ดับบลิวเอชเอ ระยอง